

2024 " "

2024 8

.....	2
.....	4
.....	5
.....	6
.....	12
.....	16
.....	19
.....	24
.....	26

“ ”

“ ”

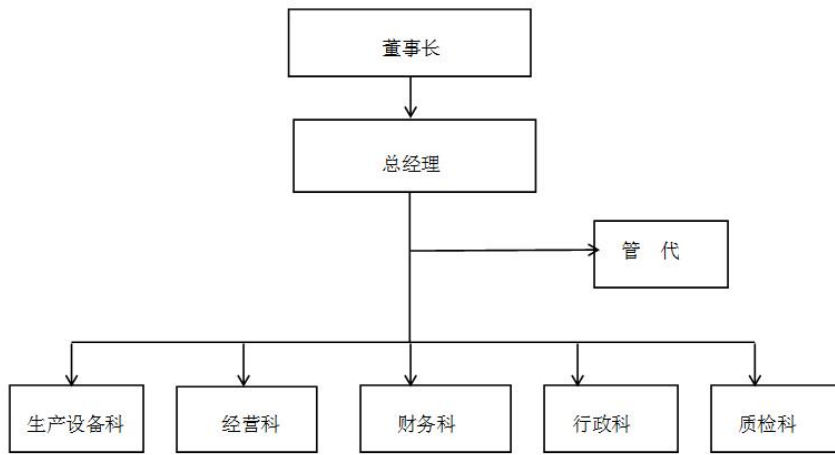
GB/T 29467- 2012

GB/T 31870- 2015

2023

2023 1 1 2023 12 31

PDF





3.2

3.2.1

"

"

1

95% 2

92

KPI

3. 2. 2

PDCA

3. 2. 3

PDCA

3.3

APQP

FMEA

4.1

4.1.1

"

"

4.1.2

4.2

4.2.1

4.2.2

4. 2. 3

"

" " "

4. 2. 3

“

5. 3

I SO9001

I SO14001

I SO45001

"

"

"

"

5. 4

6.1

" "

6.2

× 0.14 (0.14 × 0.14 × 0.14)

~~0.14~~ 0.14 0.14

0.14 ~ 0.14

6.4

100%

7.1

7.1.1

7.1.2

7.2

7.2.1

7.2.2

7.3

1

2

3

- - -

1

2

" " " "

/

2